

BOND UPDATE

Sept. 2023

#ThankYouVoters

The background of the image features several wooden blocks, likely made of light-colored wood like birch or maple. These blocks are arranged on a dark, textured surface. Some blocks have intricate patterns carved into them, including concentric circles, wavy lines, and geometric shapes. One prominent block in the foreground has a detailed logo carved into it, which appears to be the University of Georgia's 'UGA' logo with a bulldog head. The entire image is overlaid with a semi-transparent dark red filter, and the text is in a bold, white, sans-serif font.

2019 BOND CONSTRUCTION UPDATE

- **Waller Junior High Renovations and Additions**
 - Phase 2 abatement and demolition are complete.
 - Building pad compete.
- **Holleman Elementary Renovations**
 - New emergency generator is scheduled for shipment on Nov. 15.
- **Priority 1 Projects**
 - Fields Store ES chillers re-released for bids due on Sept. 27.
 - Structural plans for emergency generators are being revised.

WALLER JUNIOR HIGH

PHASE 1 COMPLETION SUMMER 2023

PHASE 2 COMPLETION SUMMER 2024



WALLER JUNIOR HIGH

- Drymalla Construction working on Phase 1 punch list items.
- Auxiliary Stadium bleacher removal is complete. (New bleachers in 2022 bond.)
- Abatement and demolition of Phase 2 West Campus is complete.
- Phase 2 building pad is complete.
- Underground plumbing is in progress in the renovation areas.
- Fire sprinkler system being installed above auditorium ceiling.
- Overhead electrical, HVAC, and plumbing have started.
- Drilled piers are scheduled to start for Phase 2 West Campus rebuild.
- Underground plumbing is scheduled to start in the rebuild area.
- Air handlers are on-site.

WALLER JUNIOR HIGH



Art Classrooms (former library demo)

WALLER JUNIOR HIGH



Phase 2 Building Pad



Building Pad Underground Utilities



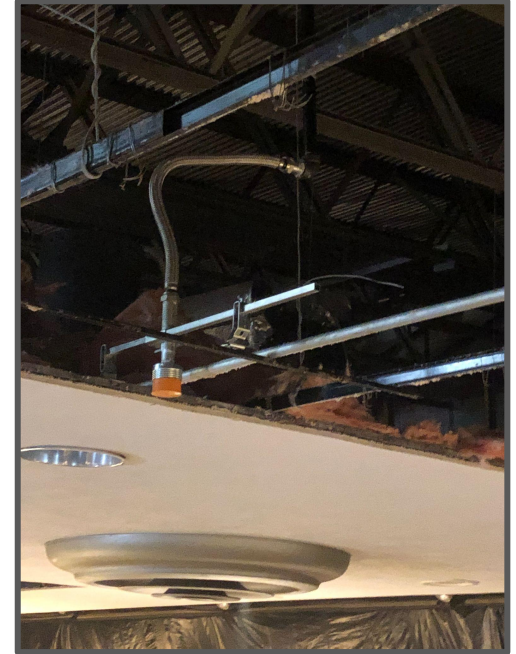
Underground Sanitary

WALLER JUNIOR HIGH



MEP Rough-In

WALLER JUNIOR HIGH



Auditorium Fire Sprinklers

An architectural rendering of a modern school building interior. The scene features a large, multi-level atrium with a prominent wide staircase in the center. People, including students and adults, are shown walking on the stairs and on the ground floor, which has a tiled floor. The building has large glass windows and a modern design with clean lines. The entire image is overlaid with a semi-transparent reddish-pink filter. The text "2022 BOND CONSTRUCTION UPDATE" is centered in large, bold, white capital letters.

2022 BOND CONSTRUCTION UPDATE

- **Elementary #6 & #7**
 - Steel erection is nearly complete with joists, decking, and detailing in progress.
 - Remain on schedule for August 2024 school openings.
- **Elementary #8**
 - Construction documents are in progress.
 - RFQ was issued for the selection of a construction manager.
- **Agricultural Science Center**
 - Construction documents are in progress.
 - Construction remains scheduled for late 2023 start.
- **Education Service Center (ESC)**
 - Design development is ongoing.
 - Construction is scheduled to start in early 2024.

- **Turlington Elementary Priority 1 - Driveway Improvements**
 - New parent driveway pavement and light pole installation is complete.
- **Schultz Junior High Priority 1 - Improvements**
 - Bleacher arrival is still on time for late October delivery.
 - Graphics package is on order.
- **Priority 1 - Improvements**
 - Construction Manager At-Risk delivery method was approved in August.
 - Selection of Construction Manager in October for November approval.

- Site paving is ongoing.
- Steel erection is nearly complete with joists, decking, and detailing in progress.
- Mason is scheduled to start the week of Sept. 5.
- Fireproofing has started in the kitchen and central plant areas.
- MEP hangers and duct straps are in progress.
- Hollow metal frames are on-site.
- Preconstruction meetings for CMU and framing are complete and will be our next steps.

ELEMENTARY #6

DELLROSE





Site Aerial



Plumbing Carriers Installed



Steel Erection with Deck Installed



Steel Erection in Progress

ELEMENTARY #7

BRIDGELAND





Aerial Site Overview



View of Front Entry

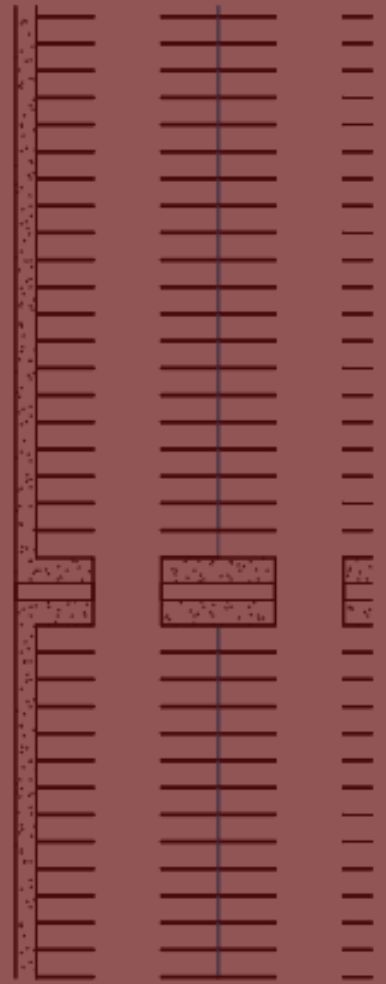
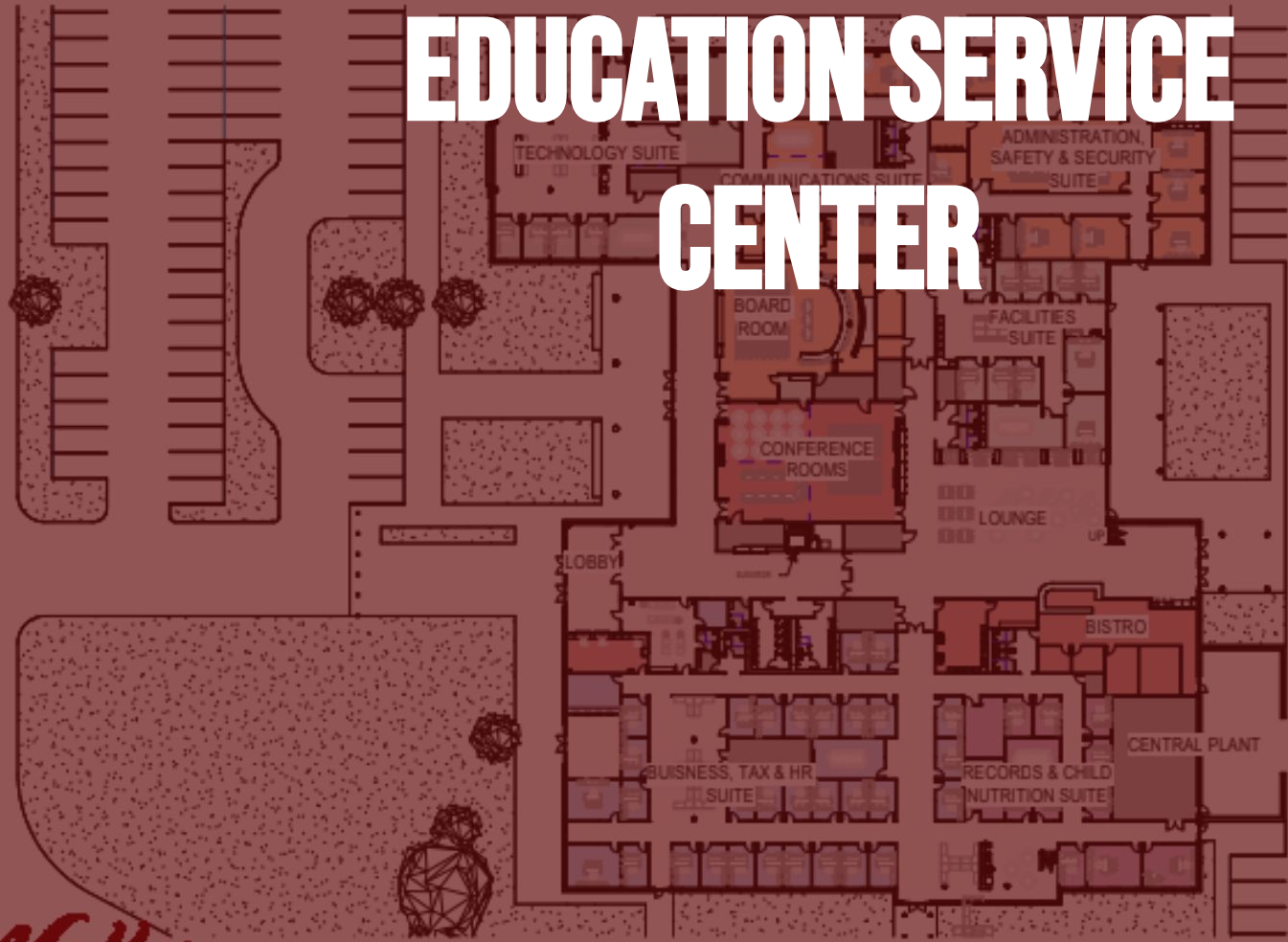


Progress at Kitchen - Roof Decking, Fireproofing, and MEP



Joists and Metal Decking in Progress at Gym/Cafeteria

EDUCATION SERVICE CENTER



- We are currently working on Schematic Design.
- Stewart Builders is continuing to work on the construction budget.
- Current projected start is February 2024.

WALLER ISD
BOND 22



Site Layout

WALLER ISD
CONSTRUCTION

AGRICULTURAL SCIENCE FACILITY

AG SCIENCE FACILITY
IMAGE - FRONT FACADE

- We are at 75% construction documents.
- Stewart Builders is continuing to work on the construction budget.
- Current projected start is December 2023.

AGRICULTURAL FACILITY



Overhead Rendering

AGRICULTURAL FACILITY



Front Elevation Rendering

TURLINGTON ELEMENTARY



- Bus, faculty, and parent driveways are complete and open for use.
- New light poles and fixtures installation has been completed.
- Driveway signage and new gates have been installed.
- Faculty parking lot has been restriped along with a fire lane refresh.



Parent Drive



Parent Drive

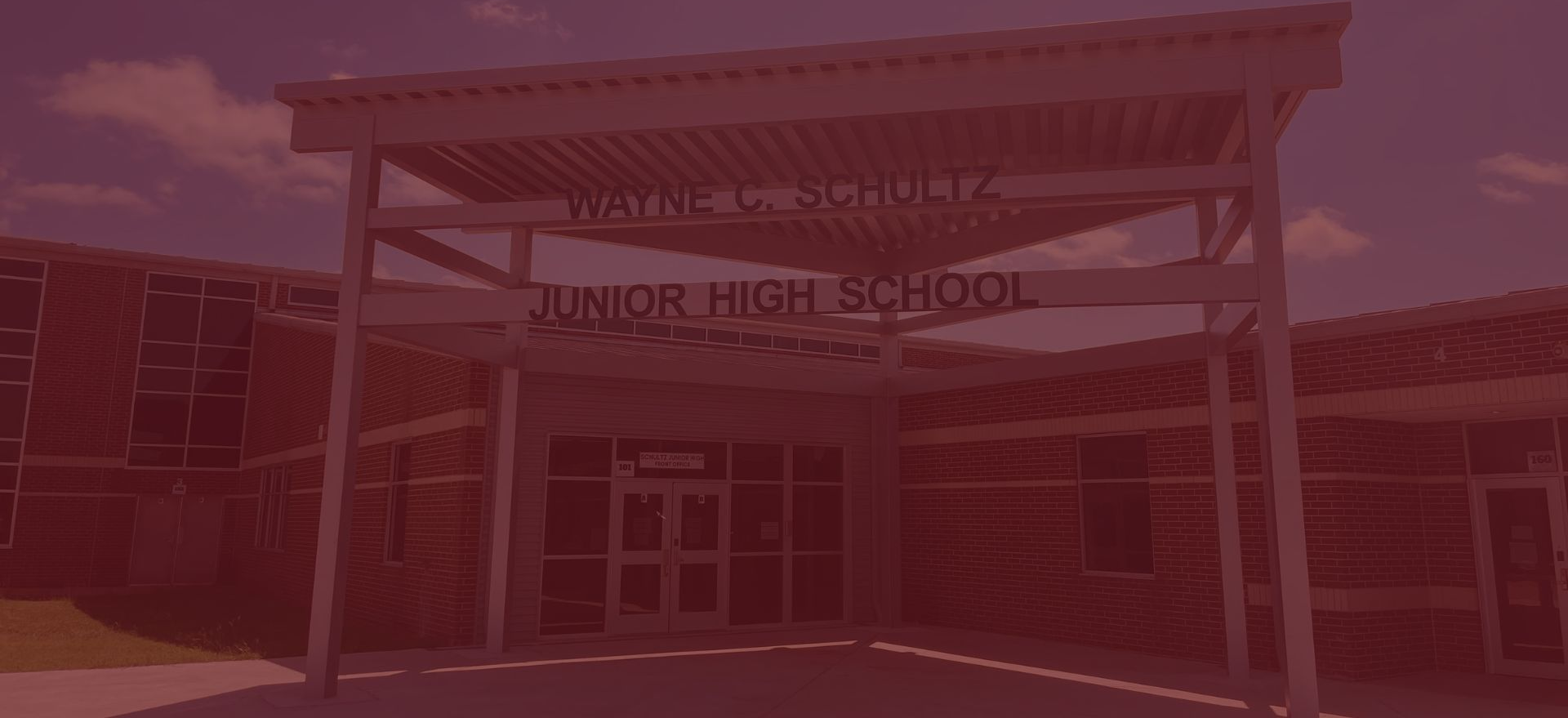


Additional Faculty Parking



Faculty Drive

SCHULTZ JUNIOR HIGH



WAYNE C. SCHULTZ

JUNIOR HIGH SCHOOL

Schultz Junior High

- Corridor tile wainscot is complete.
- Graphics package signage has been ordered; install beginning soon.
- Cafeteria microwave stations are being installed.
- Gym wall pads have been installed in the competition and auxiliary gyms.
- New bleacher install & eastern bleacher demo is scheduled for late October/early November.

A photograph of a classroom filled with children of various ages, from young children to teenagers. They are all expressing excitement, with many having their arms raised in the air. The children are seated at small, light-colored tables with blue chairs. The classroom has white walls, a tiled ceiling, and various educational posters and supplies visible in the background. The entire image is overlaid with a semi-transparent red filter.

#ThankYouVoters

Waller
Independent School District